

QUICK SEARCH GUIDE



XR2000 SERIES

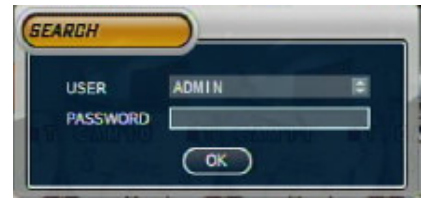
Press the **SEARCH** Button and the Log-In screen appears.

Input the password and press **ENTER** (Default [1][2][3][4])

Use the **ARROW KEYS** to select the search method.

SEARCH BY TIME or SEARCH BY EVENT

Select the search method and press **ENTER**



SEARCH BY TIME

1. Use **ARROW KEYS** to select the required date and press **ENTER**.
(Recorded Time will appear in the time bar).
2. Use **ARROW KEYS** to select the required time and press **ENTER**.
The selected video footage will now play.
3. Use the **JOG SHUTTLE** to fast forward or rewind playback.
4. Press **CANCEL** to return to Live Mode.



SEARCH BY EVENT

1. Use the **ARROW KEYS** and **ENTER** to input the required **FROM DATE & TIME**
2. Use the **ARROW KEYS** and **ENTER** to input the required **TO DATE & TIME**
3. Use the **ARROW KEYS** and **ENTER** to select the required **CHANNELS (CAMERAS)**
4. Use the **ARROW KEYS** and **ENTER** to input the required **EVENT/EVENTS** (Alarm, Motion, Timer, Etc)
5. Move to **START** and Press the **ENTER** Key.
The events are now logged.
6. Use the **ARROW KEYS** to select the required event and press **ENTER**.
The selected video footage will now play.
7. Use the **JOG SHUTTLE** to fast forward or rewind playback.
8. Press **CANCEL** to return to Live Mode

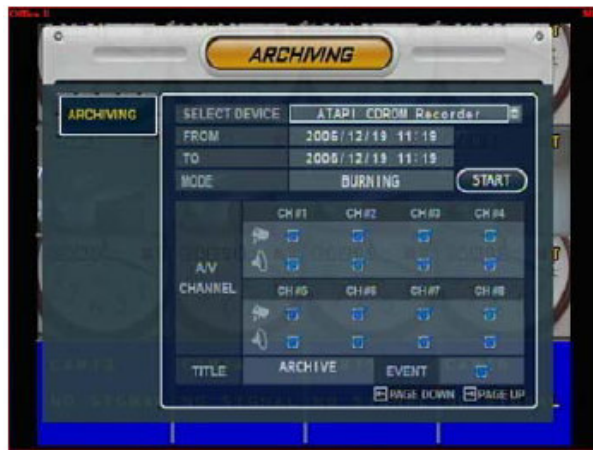


QUICK BACK-UP GUIDE



XR2000 SERIES

1. Insert the USB memory / Blank CD into DVR
2. Press the **ARCHIVE** Button and the Log-In screen appears.
3. Input the password and press **ENTER** (Default [1][2][3][4])
(For the XR2004: Press **MENU** Button and Log-in.
Use the **ARROW KEYS** and **ENTER** to the Archive Menu.)



4. Use the **ARROW KEYS** and **ENTER** to Select the Device (USB Storage /ATAPI CD-ROM Recorder)
5. Use the **ARROW KEYS** and **ENTER** to input the required **FROM DATE & TIME**
6. Use the **ARROW KEYS** and **ENTER** to input the required **TO DATE & TIME**
7. Use the **ARROW KEYS** and **ENTER** to input the required **CAMERAS AND AUDIO CHANNELS**



8. Use the **ARROW KEYS** to select **START** and press **ENTER** (All cameras files size will be displayed)
Select **OK** to back up the video/audio footage.
9. Press **CANCEL** to return to Live Mode