

30 SECOND PROGRAMMING GUIDE

INSTALLATION NOTES

Always remember to factory default the controller before you start programming.

Always remember to place the supplied varistor across the terminals of the door strike coil to protect the relay contacts.

Never use the onboard relay to switch AC mains voltage. An external relay isolated electrically from the ACT 5e should be used for this purpose.

Don't forget to change the programming code to something known only to yourself.

IMPORTANT

As with any access control system, always ensure that there is an alternate means of escape in the event of the unit failing to operate due to power loss or in the event of fire.

ACT 5e Digital Keypad Programming



Access Control Technology



ACT 5e Digital Keypad Installation Manual

To enter programming mode:
Press the **X** button followed by the engineering code (initially 9999). The LED will flash amber while in programming mode. If **X** is pressed at any time or no key is pressed within 30 seconds, programming mode is exited.

Changing Codes: (from programming mode)
Enter 0 (Change codes)
0-9, **X** (user number 0-9, **X** = programming code)
0000-9999 (4 digit code – 0000 deletes user)
Default user codes : Programming = 9999, User 1 = 1234,

Toggle Relay (from programming mode):
Enter 1 (Toggle Output)
0-9, 0,1 (user number 0-9)
0,1 (0 = Toggle Relay, 1 = Relay Timed)

Setting the Relay active time (from programming mode):
Enter 2 (Set Relay active Time)
0 (Relay Timer) {Buzzer sounds indicating timing... wait required period}
X (Stop timing) {Buzzer stops — timer set}

Setting the Backlight: (from programming mode)
Enter 40 (Set Permanent Backlight)
0,1 (0 = Backlight always off, 1 = Backlight always on)
Enter 41 (Set Auto Backlight)
0,1 (0 = Auto Backlight off, 1 = Backlight on if key pressed, Permanent Backlight overrides Auto)

Restoring Factory Defaults: (from Programming Mode)
If the programming code has been forgotten, (Factory Defaults Restored & Keypad exits programming mode)

1. Remove the power from the unit.
 2. Remove link LK1.
 3. Apply power to unit.
 4. Wait 3 seconds and remove power again.
 5. Replace link LK1.
 6. Restore power and proceed with programming.
- Note: The keypad will not operate correctly without LK1 in place.

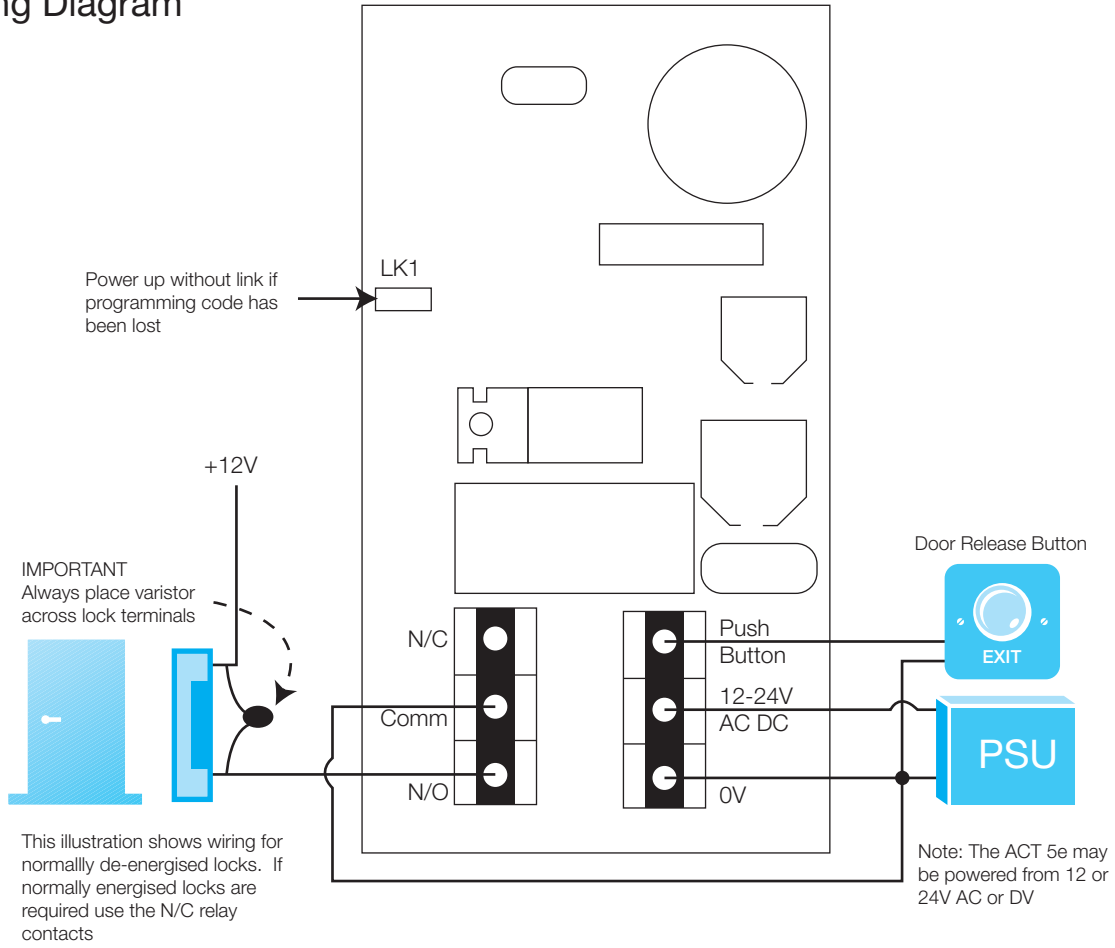
When three invalid codes have been entered in a row. The keypad will enter lockout mode for 20 seconds. During this time, the red indicator will flash and all user codes will be inactive.

Incorrect Code Lockout

Note: The keypad may be returned to its factory default condition at any time by entering the programming mode and pressing the **X** key three times.
The keypad is now ready for normal use.

1. Enter Programming Mode. Press **X** button followed by the programming code (9999)
The LED will flash Amber
Change User 1 code.
Press 0, then 1 followed by the new user 1 code
2. Change User 1 code.
Press 0, then 1 followed by the new user 1 code (four digits)
3. Change Programming Code.
Press 0, then **X** followed by the new programming code (four digits).
4. Exit Programming Mode. Press the **X** button. The LED will be Red.

ACT 5e Wiring Diagram



Mounting Instructions for Surface or Flush ACT 5e

Spacers break away from main component when required by installer for use

View showing mounting plate before spacers are broken away by installer

View showing spacer stacking

Surface Mount Unit

The surface mount collar is mounted on the wall using the fixing kit supplied in the box.

Note:
Determine the distance between the pattress box and the mounting plate, using the spacers that are labelled 1mm to 4mm. A spacer of the correct length is assembled by stacking the spacers together.

Security screw supplied with the unit

Place the cap onto the unit and push firmly in place

Place the reader / keypad onto the surface mount collar and clip down into place. Use the security screw supplied to attached the unit to the surface mount collar.

Security screw supplied with the unit

Place the cap onto the unit and push firmly in place

Place the reader / keypad onto the surface mount collar and clip down into place. Use the security screw supplied to attached the unit to the flush mount collar.

Flush Mount Unit

Standard pattress box

Screws

Mounting plate is attached to the pattress using the screws supplied. **Ensure** the correct spacers have been used to bridge the gap between the mounting plate and the fixing wings of the pattress box to avoid the mounting plate being distorted.